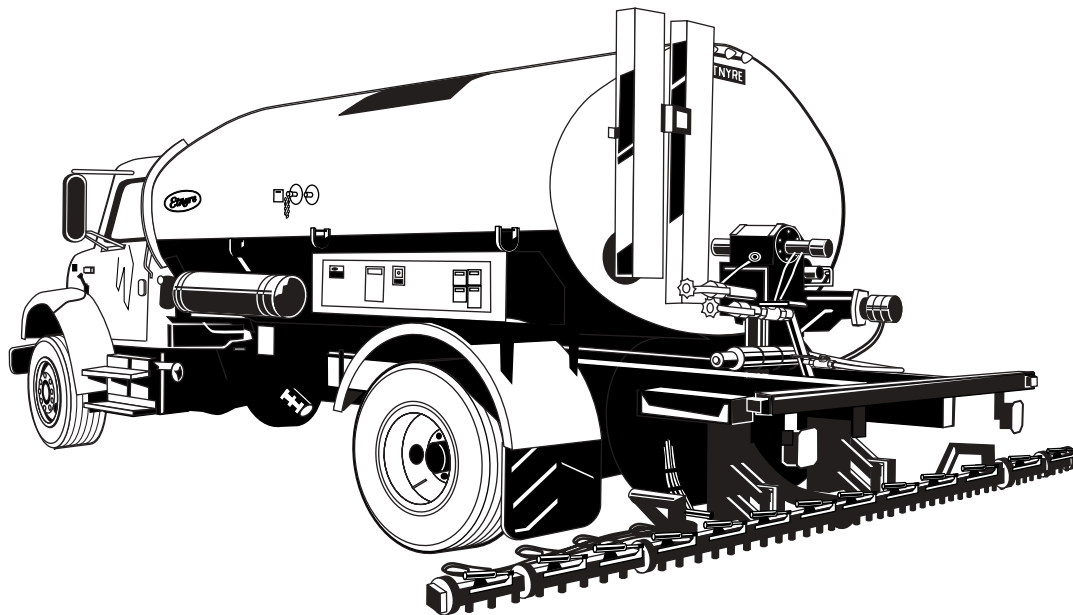


M-134-07



**Black-Topper®
SHOOTER Series
Asphalt Distributor**

**Electrical &
Hydraulic
Schematics**



E. D. ETNYRE & CO. 1333 S. Daysville Road, Oregon, Illinois 61061
Phone: 815/732-2116 or 800/995-2116 • Fax: 800-521-1107 • www.etnyre.com

Shooter Wiring & Hydraulic Schematics INDEX

Shooter Hydraulic Schematic #9302242
Shooter inside cab box w/DC2 and 1' controls #9302348
Shooter outside cab box w/DC2 and 1' controls #9302349
Shooter inside cab box w/DC2 and gang controls #9302350
Shooter outside cab box w/DC2 and gang controls #9302351

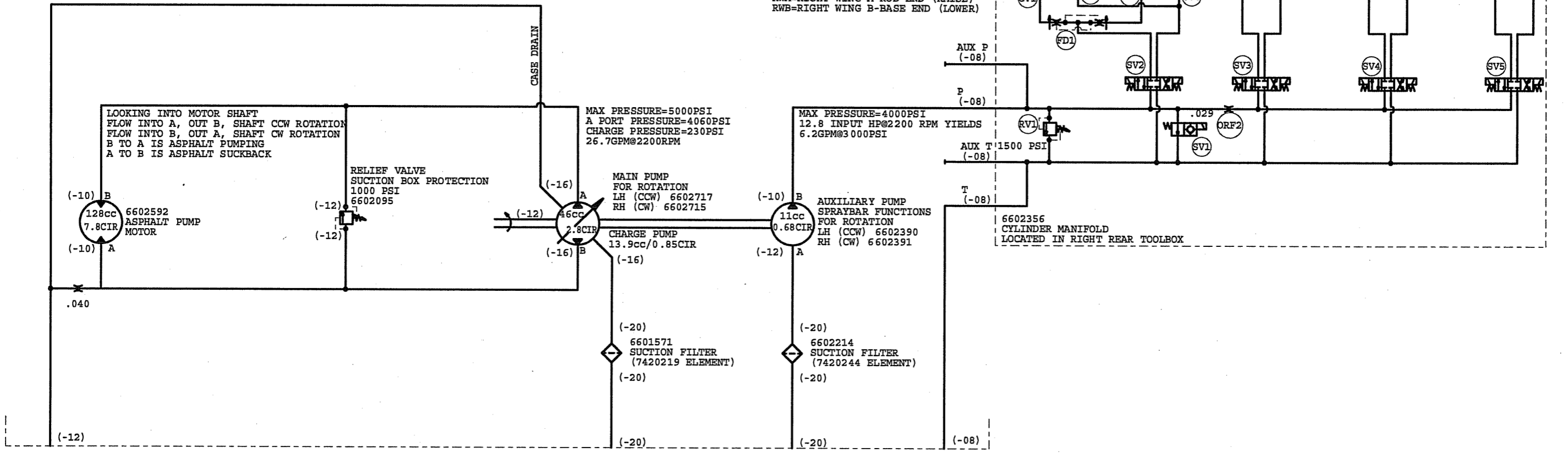
Shooter II

Shooter II, S2X 1'16 Control Box #9303584
Shooter II, 1'16 Rear Box #9303585
Hydraulic Schematic - Shooter II #9303586

REVISIONS			
REV	DESCRIPTION	DATE	APPROVED

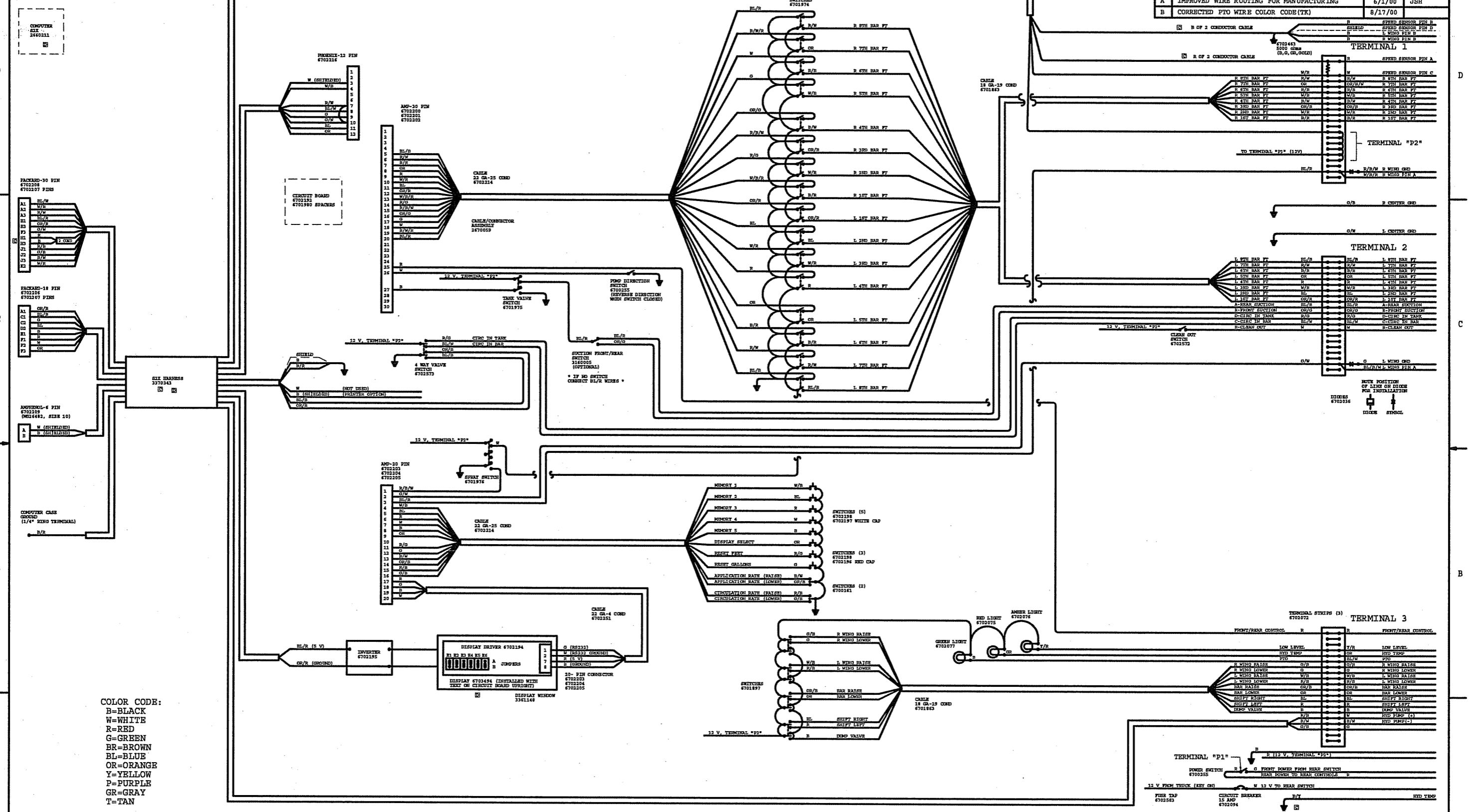
P=PRESSURE (IN)
 T= TANK (RETURN)
 AUX P= AUXILLARY PRESSURE (OUT)
 AUX T= AUXILLARY TANK (AUX RETURN)
 LLA=LEFT LIFT A-ROD END (LOWER)
 LLB=LEFT LIFT B-BASE END (RAISE)
 RLA=RIGHT LIFT A-ROD END (LOWER)
 RLB=RIGHT LIFT B-BASE END (RAISE)
 SA=SHIFT A-ROD END (RIGHT)
 SB=SHIFT B-BASE END (LEFT)
 LWA=LEFT WING A-ROD END (RAISE)
 LWB=LEFT WING B-BASE END (LOWER)
 RWA=RIGHT WING A-ROD END (RAISE)
 RWB=RIGHT WING B-BASE END (LOWER)

LEFT BAR LIFT LOWER/RAISE CYLINDER 6601781
 RIGHT BAR LIFT LOWER/RAISE CYLINDER 6601781
 SHIFT RIGHT/LEFT CYLINDER 6602230
 LEFT WING RAISE/LOWER CYLINDER 6602230
 RIGHT WING RAISE/LOWER CYLINDER 6602230



GENERAL NOTES: REMOVE ALL BURRS BREAK SHARP EDGES MINIMUM BEND RAD. UNLESS SPECIFIED BEND RELIEF SHOP OPTION	DFTF RJ CHKR ENGR APFD	E. D. ETNYRE & CO. OREGON, IL. 61061 ALL DIMENSIONS IN INCHES DO NOT SCALE DWG DRAWING TITLE HYDRAULIC SCHEMATIC-SHOOTER
SER. NO: NONE SIM. TO: WEIGHT:	TOLERANCE UNLESS SPECIFIED FRACTIONAL ±1/32 DECIMAL .XX ±.03 .XXX ±.010 ANGLES ±0°30'	Dwg DRAWING NO. 9302242 SIZE D SCALE 1/1 DATE 11/9/99 SHEET 1 OF 1

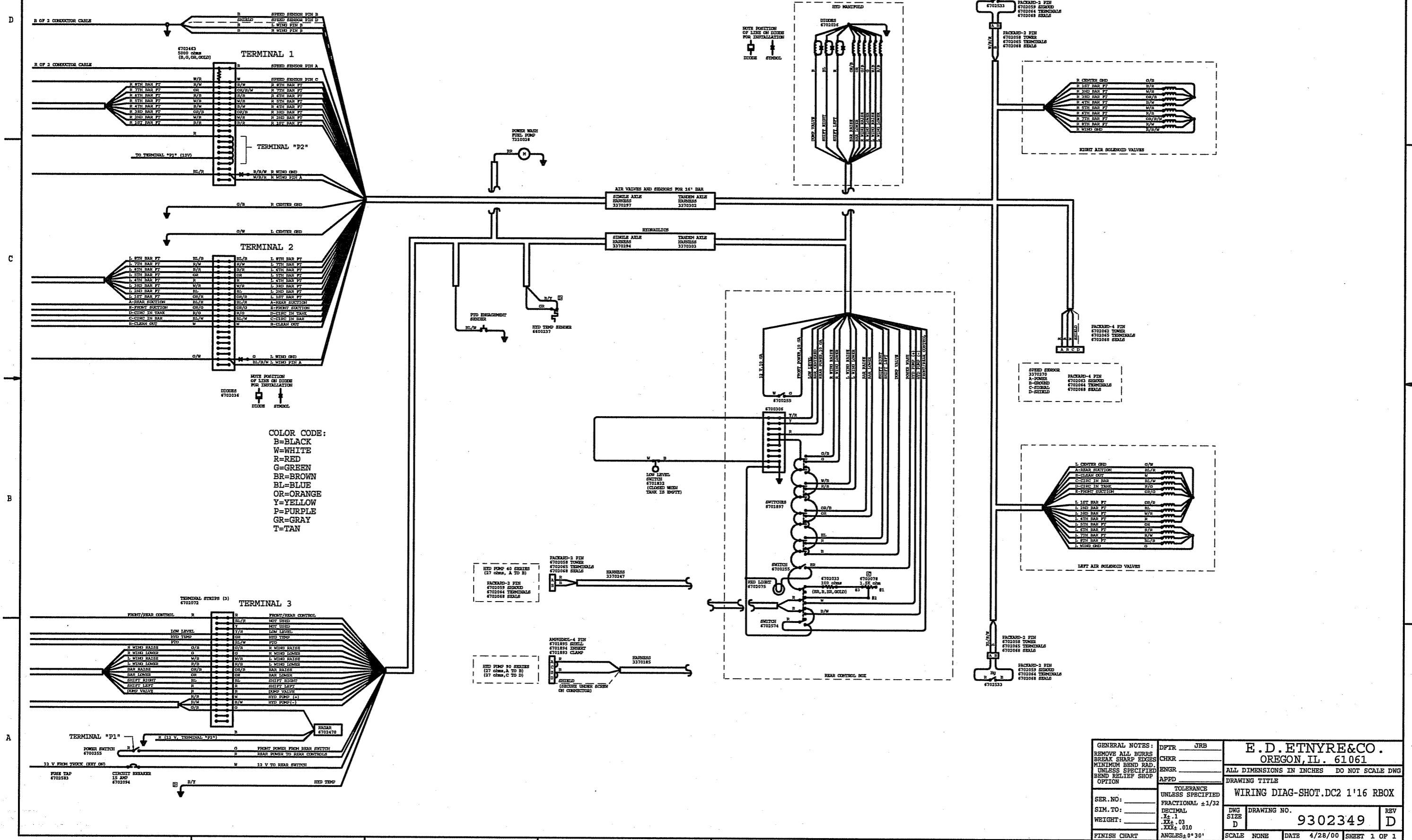
REV	DESCRIPTION	DATE	APPROVED
A	IMPROVED WIRE ROUTING FOR MANUFACTURING	6/1/00	JSH
B	CORRECTED PTO WIRE COLOR CODE (TK)	8/17/00	



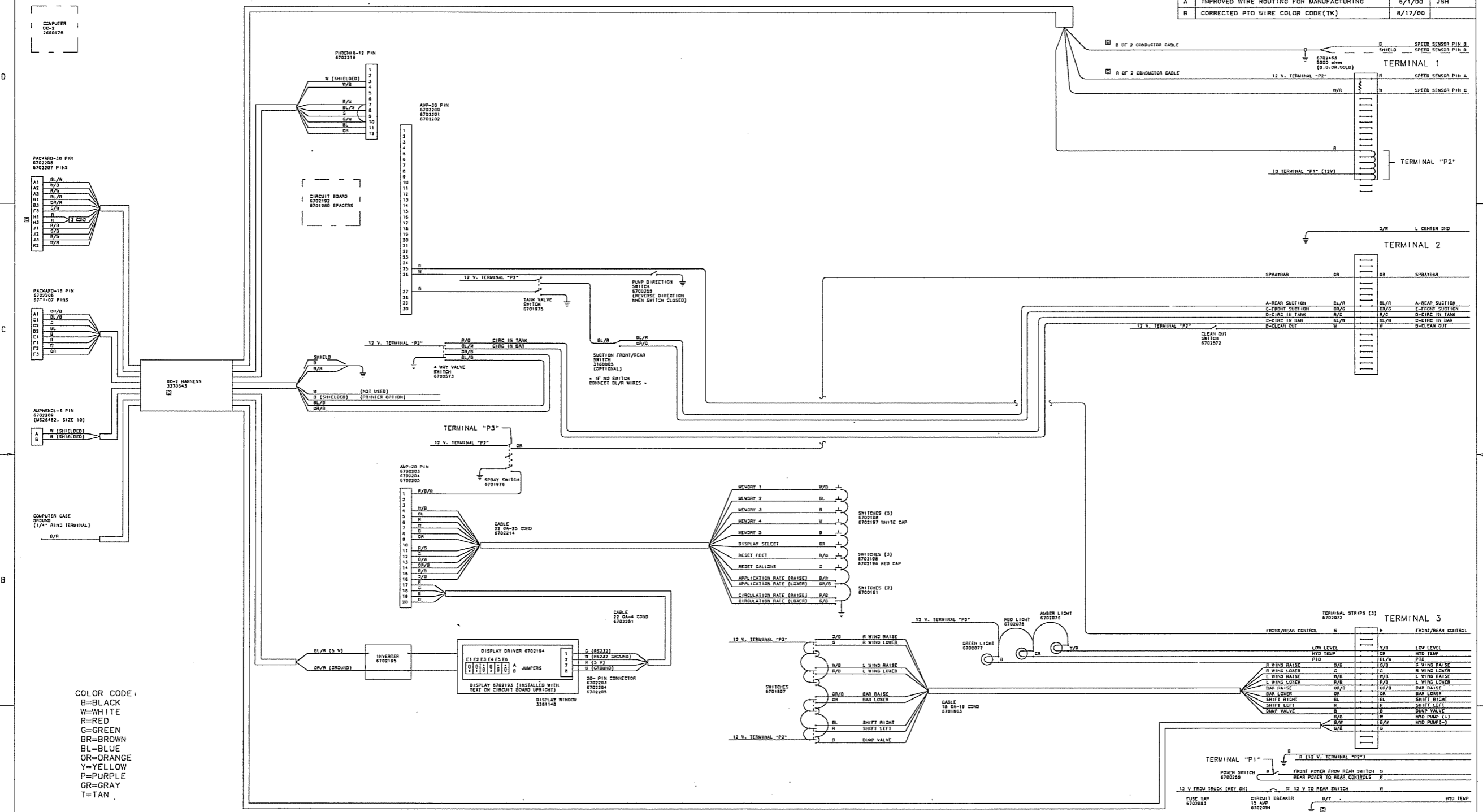
COLOR CODE:
 B=BLACK
 W=WHITE
 R=RED
 G=GREEN
 BR=BROWN
 BL=BLUE
 OR=ORANGE
 Y=YELLOW
 P=PURPLE
 GR=GRAY
 T=TAN

GENERAL NOTES: REMOVE ALL BURRS BREAK SHARP EDGES MINIMUM BEND RAD. UNLESS SPECIFIED BEND BELIEF SHOP OPTION	DFTR JRB CHKR ENGR APPD	E. D. ETNYRE & CO. OREGON, IL. 61061	
SER. NO.: SIM. TO: WEIGHT:	TOLERANCE UNLESS SPECIFIED FRACTIONAL ±1/32 DECIMAL .XX ±.01 .XXX ±.010	ALL DIMENSIONS IN INCHES DO NOT SCALE DWG	
FINISH CHART	ANGLES ±0° 30'	DRAWING TITLE WIRING DIAG-SHOT.DC2 1'16 CBOX	
		DWG NO. D	REV D
		SCALE NONE	DATE 4/28/00 SHEET 1 OF 1

REVISIONS			
REV	DESCRIPTION	DATE	APPROVED
A	IMPROVED WIRE ROUTING FOR MANUFACTURING	6/1/00	JSH
B	CORRECTED PTO WIRE COLOR CODE (TK)	8/17/00	
C	RESISTOR 6703078 WAS 6701911 1K (CB)	3/06/01	
D	ADDED 1 GND, RMV'D 1 GND (CB)	11/26/01	



REVISIONS			
REV	DESCRIPTION	DATE	APPROVED
A	IMPROVED WIRE ROUTING FOR MANUFACTURING	6/1/00	JSH
B	CORRECTED PTO WIRE COLOR CODE(TK)	8/17/00	



COLOR CODE:
 B=BLACK
 W=WHITE
 R=RED
 G=GREEN
 BR=BROWN
 BL=BLUE
 OR=ORANGE
 Y=YELLOW
 P=PURPLE
 GR=GRAY
 T=TAN

GENERAL NOTES:
 REMOVE ALL BURRS
 BREAK SHARP EDGES
 MINIMUM BEND RAD.
 UNLESS SPECIFIED
 BEND RELIEF SHD
 OPTION

DFT: JRB
 CHKR: _____
 ENGR: _____
 APPD: _____

SER. NO.: _____
 SIM. TO: _____
 WEIGHT: _____
 FINISH CHART: _____

TOLERANCE
 UNLESS SPECIFIED
 FRACTIONAL ± 1/32
 DECIMAL
 .XX ± .01
 .XXX ± .010
 ANGLES ± 0° 30'

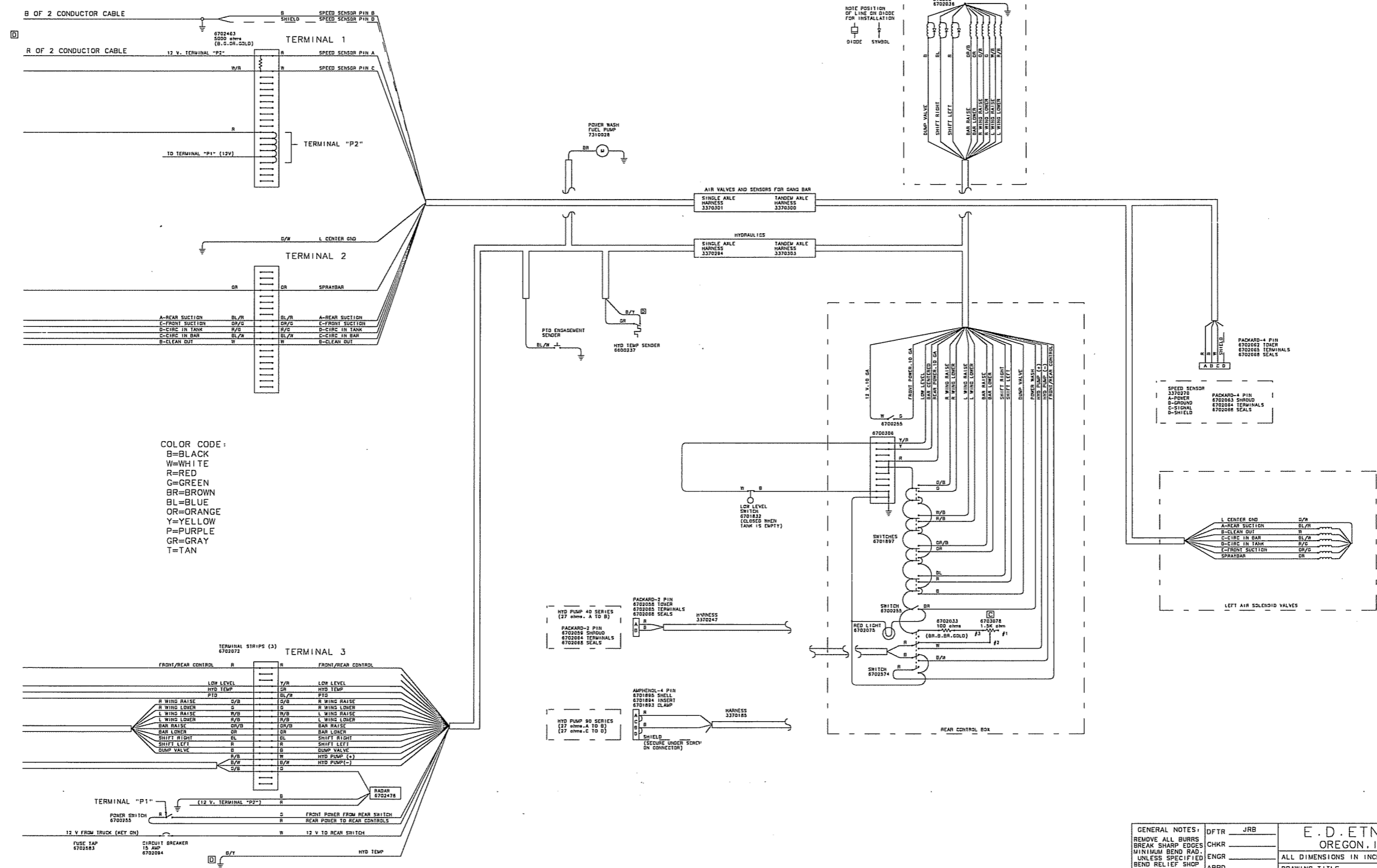
E. D. ETNYRE & CO.
 OREGON, I.L. 61061

ALL DIMENSIONS IN INCHES DO NOT SCALE DWG

DRAWING TITLE
 WIRING DIAG-SHOT.DC2 GANG CBOX

DWG SIZE: D
 DRAWING NO.: 9302350
 DATE: 4/7/00
 SHEET: 1 OF 1

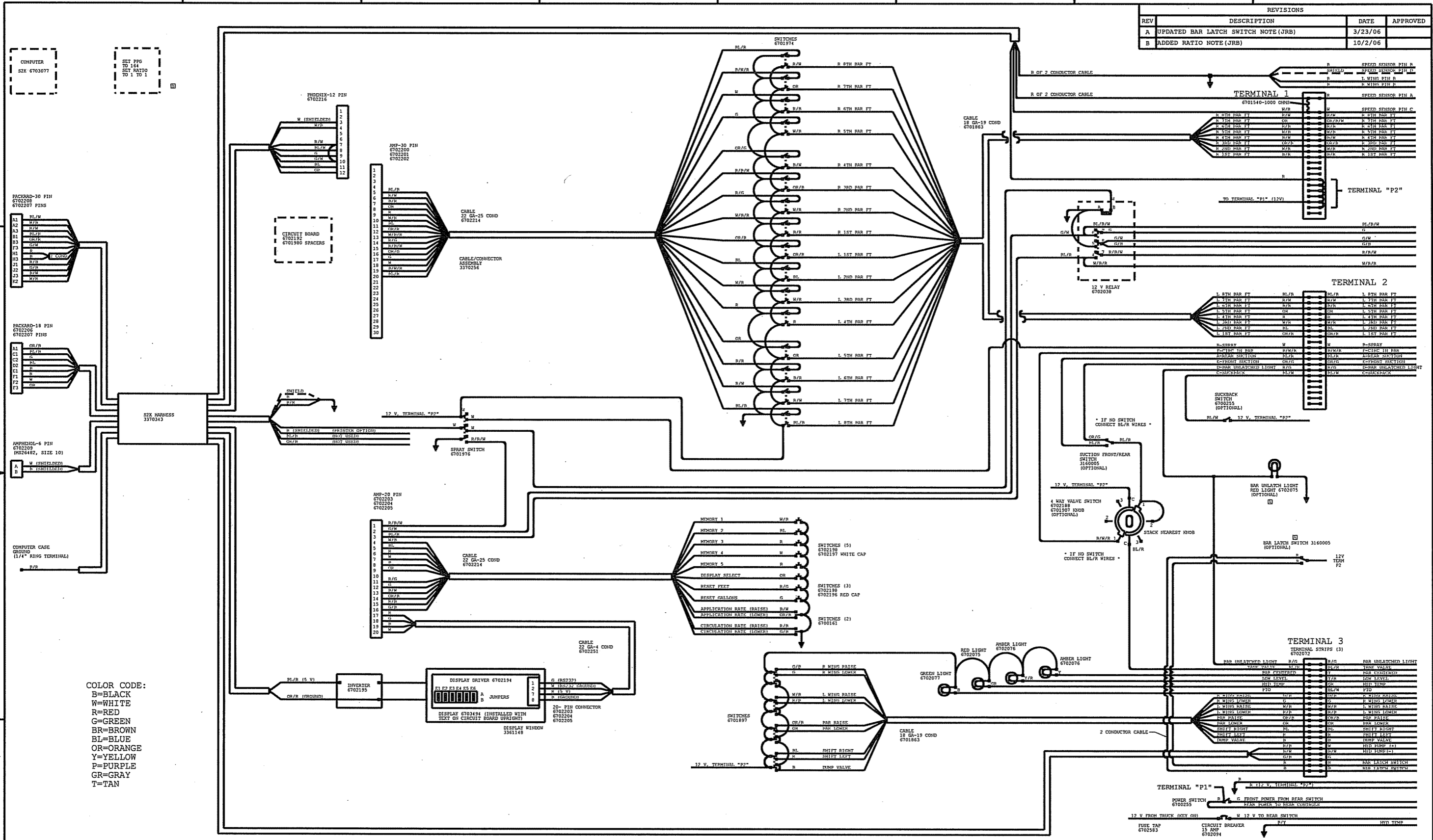
REV	DESCRIPTION	DATE	APPROVED
A	IMPROVED WIRE ROUTING FOR MANUFACTURING	6/1/00	JSH
B	CORRECTED PTO WIRE COLOR CODE(TK)	8/17/00	
C	RESISTOR 6703078 WAS 6701911 1K (CB)	3/06/01	
D	ADDED 1 GND.RMV'D 1 GND (CB)	11/26/01	



COLOR CODE:
 B=BLACK
 W=WHITE
 R=RED
 G=GREEN
 BR=BROWN
 BL=BLUE
 OR=ORANGE
 Y=YELLOW
 P=PURPLE
 GR=GRAY
 T=TAN

GENERAL NOTES: REMOVE ALL BURRS BREAK SHARP EDGES MINIMUM BEND RAD. UNLESS SPECIFIED BEND RELIEF SHOP OPTION	DFTR _____ JRB CHKR _____ ENCR _____ APPD _____	E. D. ETNYRE & CO. OREGON, IL. 61061 ALL DIMENSIONS IN INCHES DO NOT SCALE DWG
SER. NO.: _____ SIM. TO: _____ WEIGHT: _____ FINISH CHART _____	TOLERANCE UNLESS SPECIFIED FRACTIONAL ±1/32 DECIMAL -XX .1 -XXX .010 ANGLES ±0° 30'	DRAWING TITLE WIRING DIAG-SHOT.DC2 GANG RBOX DRAWING NO. 9302351 SCALE NONE DATE 4/7/00 SHEET 1 OF 1

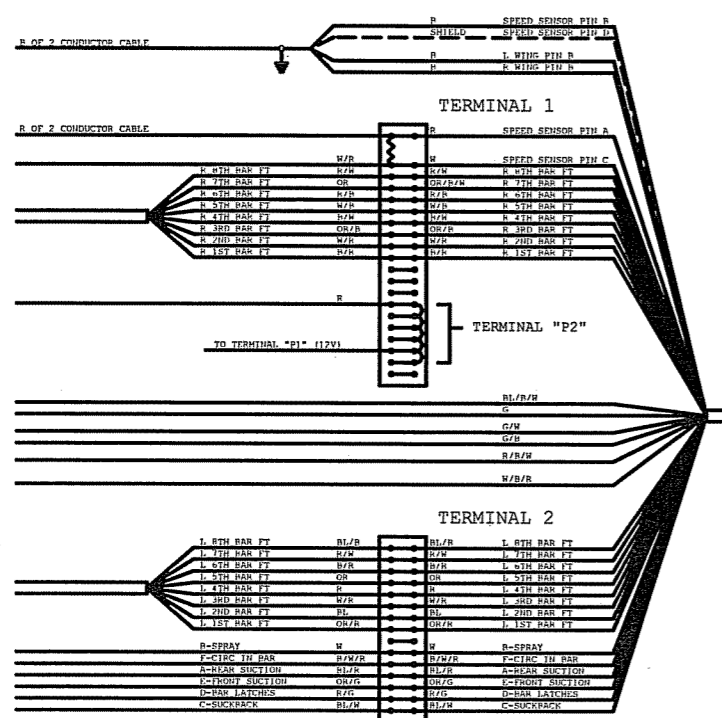
REVISIONS			
REV	DESCRIPTION	DATE	APPROVED
A	UPDATED BAR LATCH SWITCH NOTE (JRB)	3/23/06	
B	ADDED RATIO NOTE (JRB)	10/2/06	



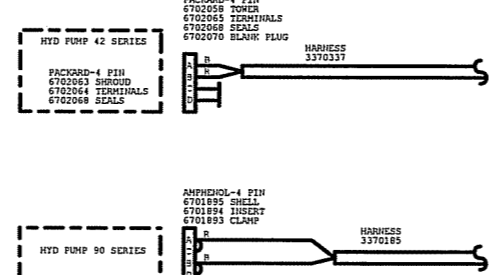
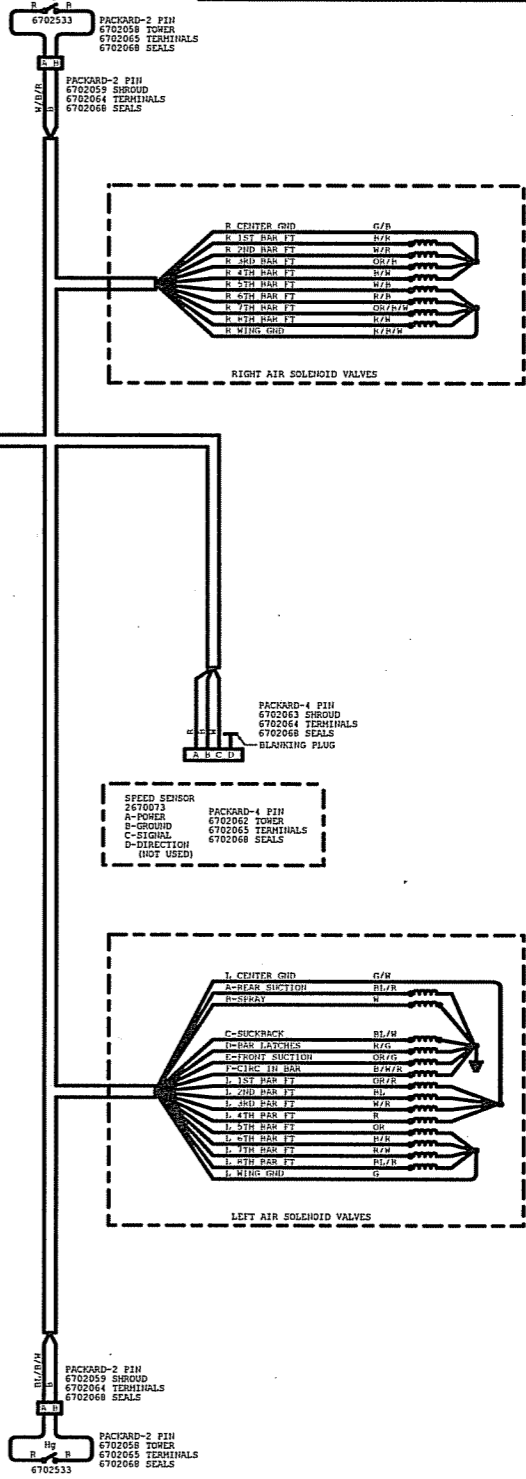
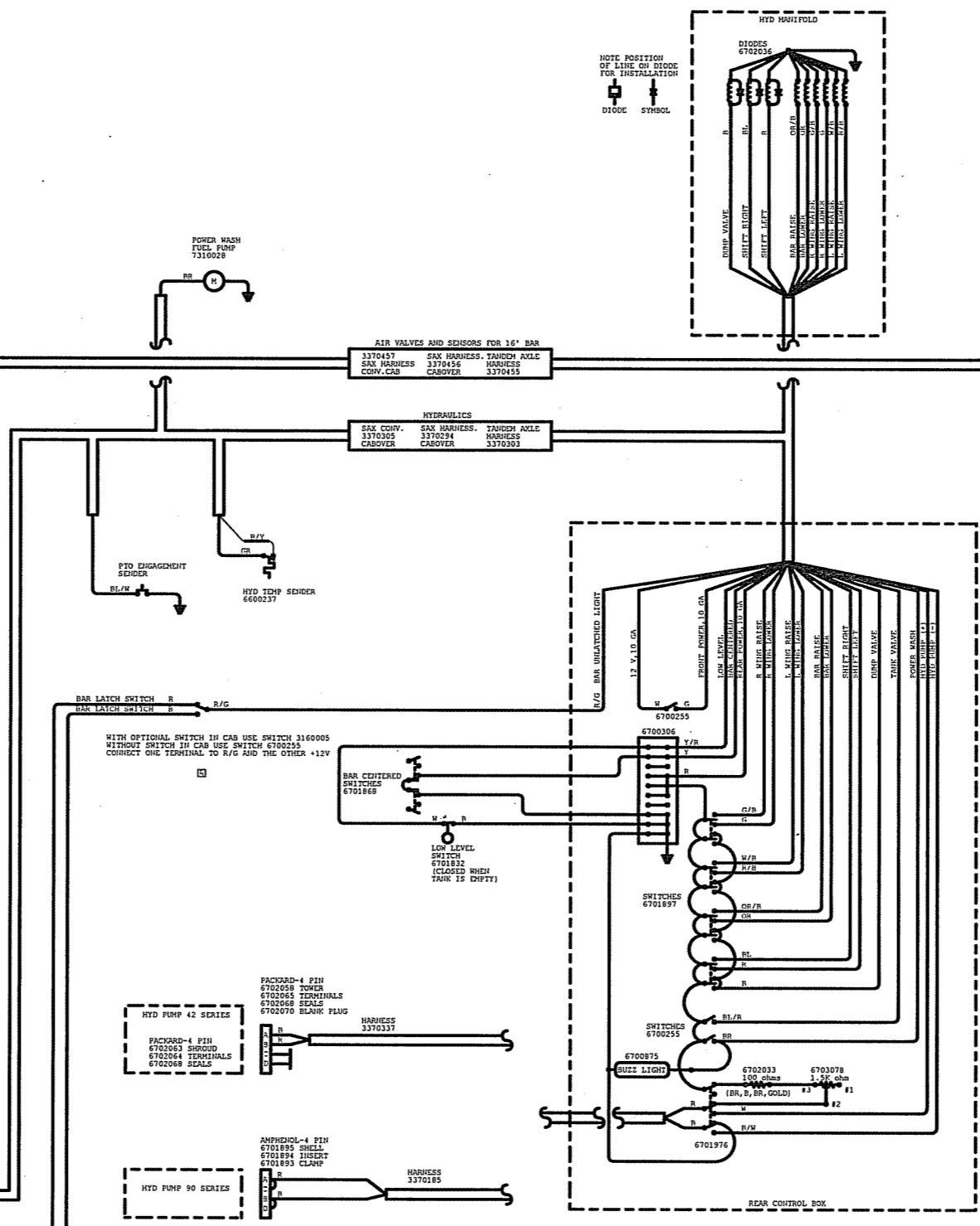
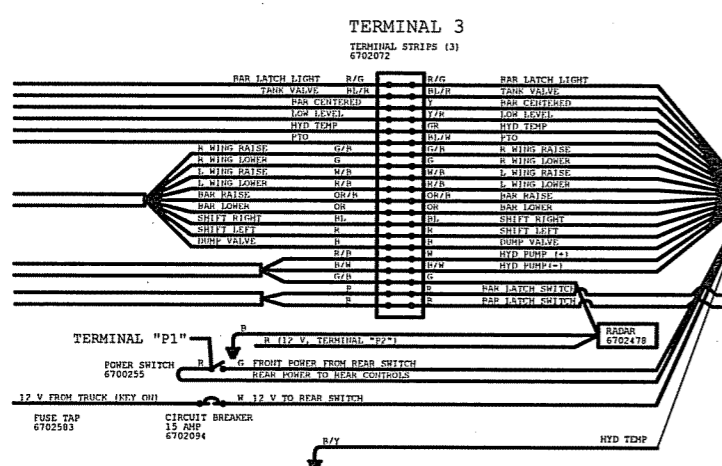
COLOR CODE:
 B=BLACK
 W=WHITE
 R=RED
 G=GREEN
 BR=BROWN
 BL=BLUE
 OR=ORANGE
 Y=YELLOW
 P=PURPLE
 GR=GRAY
 T=TAN

GENERAL NOTES: REMOVE ALL BURRS BREAK SHARP EDGES MINIMUM BEND RAD. UNLESS SPECIFIED BEND RELIEF SHOP OPTION	DFTR _____ CHKR _____ ENGR _____ APPD _____	E. D. ETNYRE & CO. OREGON, IL. 61061	
SER. NO: M4976	UNLESS SPECIFIED	ALL DIMENSIONS IN INCHES DO NOT SCALE DWG	
SIM. TO: 9302804	FRACTIONAL ±1/32	DRAWING TITLE	
WEIGHT: _____	DECIMAL .XX1 .03 .XXX1 .010	WIRING DIAG-SHOOTER 2, S2X 1'16 CBOX	
FINISH CHART	ANGLES ±0° 30'	DWG SIZE D	DRAWING NO. 9303584
		SCALE NONE	REV B
		DATE 7/18/05	SHEET 1 OF 1

REVISIONS			
REV	DESCRIPTION	DATE	APPROVED
A	UPDATED BAR LATCH SWITCH NOTE (JRB)	3/23/06	



COLOR CODE:
 B=BLACK
 W=WHITE
 R=RED
 G=GREEN
 BR=BROWN
 BL=BLUE
 OR=ORANGE
 Y=YELLOW
 P=PURPLE
 GR=GRAY
 T=TAN

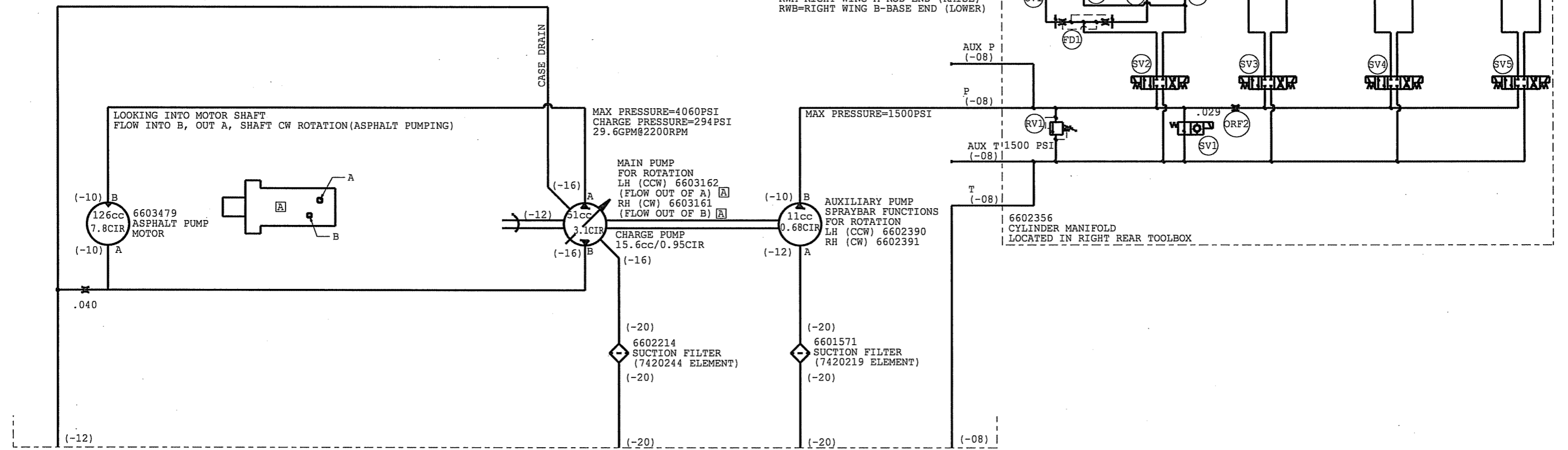


GENERAL NOTES: REMOVE ALL BURRS BREAK SHARP EDGES MINIMUM BEND RAD. UNLESS SPECIFIED BEND RELIEF SHOP OPTION	DFTR JR CHKR ENGR APPD	E. D. ETNYRE & CO. OREGON, IL. 61061
SER. NO: M4976 SIM. TO: WEIGHT: FINISH CHART	TOLERANCE UNLESS SPECIFIED FRACTIONAL ±1/32 DECIMAL ±.1 XXX.03 XXXX.010 ANGLES ±0°30'	ALL DIMENSIONS IN INCHES DO NOT SCALE DWG DRAWING TITLE WIRING DIAG-SHOOTER 2 1'16RBOX DRAWING NO. 9303585 SCALE NONE DATE 7/18/05 SHEET 1 OF 1
		REV A

REVISIONS			
REV	DESCRIPTION	DATE	APPROVED
A	ADDED SKETCH & NOTES (SH)	10/18/05	
B	UPDATED INFO (JRB)	10/2/06	

P=PRESSURE (IN)
 T= TANK (RETURN)
 AUX P= AUXILLARY PRESSURE (OUT)
 AUX T= AUXILLARY TANK (AUX RETURN)
 LLA=LEFT LIFT A-ROD END (LOWER)
 LLB=LEFT LIFT B-BASE END (RAISE)
 RLA=RIGHT LIFT A-ROD END (LOWER)
 RLB=RIGHT LIFT B-BASE END (RAISE)
 SA=SHIFT A-ROD END (RIGHT)
 SB=SHIFT B-BASE END (LEFT)
 LWA=LEFT WING A-ROD END (RAISE)
 LWB=LEFT WING B-BASE END (LOWER)
 RWA=RIGHT WING A-ROD END (RAISE)
 RWB=RIGHT WING B-BASE END (LOWER)

LEFT BAR LIFT LOWER/RAISE CYLINDER 3353733
 RIGHT BAR LIFT LOWER/RAISE CYLINDER 3353733
 SHIFT RIGHT/LEFT CYLINDER 6603416
 LEFT WING RAISE/LOWER CYLINDER 6602230
 RIGHT WING RAISE/LOWER CYLINDER 6602230



GENERAL NOTES: REMOVE ALL BURRS BREAK SHARP EDGES MINIMUM BEND RAD. UNLESS SPECIFIED BEND RELIEF SHOP OPTION	DFTR _____ JR CHKR _____ ENGR _____ APPD _____	E. D. ETNYRE & CO. OREGON, IL. 61061 ALL DIMENSIONS IN INCHES DO NOT SCALE DWG DRAWING TITLE HYDRAULIC SCHEMATIC-SHOOTER 2
SER. NO.: _____ SIM. TO: _____ WEIGHT: _____ FINISH CHART _____	TOLERANCE UNLESS SPECIFIED FRACTIONAL ±1/32 DECIMAL .XX ±.1 .XXX ±.03 .XXX ±.010 ANGLES ±0°30'	DWG DRAWING NO. SIZE D 9303586 SCALE 1/1 DATE 7/15/05 SHEET 1 OF 1